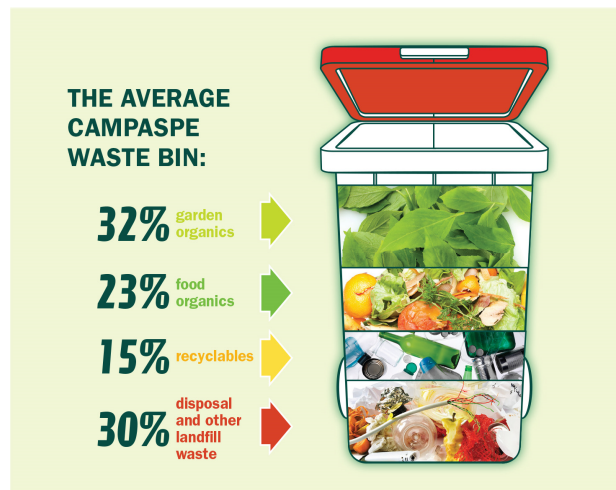


# RECYCLING AND REUSING

## TIPS ON RECYCLING AND REUSING IN CAMPASPE

The Shire of Campaspe has many options for recycling new or used unwanted items. Sending recyclable items to landfill is both economically unviable and detrimental to the environment.

There are many ways in which you can decrease the amount of waste you send to landfill. One of those ways is reducing the amount of waste you dispose of in your kerbside (red lid) waste bin.



There are a number of ways to recycle items in Campaspe:

### 1) Campaspe Transfer Stations

⇒ see Resource Recovery Facilities info sheet for information on what can be recycled for free

### 1) Recycle/Opportunity Shops

⇒ Various locations in the towns of Echuca, Kyabram, Rochester, Tongala, Rushworth

⇒ See Opportunity Shops info sheet for more information on op shops in Campaspe

### 3) Mobile Muster

⇒ All Shire of Campaspe Customer Service Centres and the Echuca Environment Centre and Mt Scobie Transfer Station

### 4) Planet Ark Battery Recycling Initiative (household battery recycling)

⇒ Aldi (Echuca)

### 5) Cartridges for Planet Ark (printer cartridge recycling)

⇒ Australia Post Outlets (various locations in Campaspe)

⇒ Dick Smith (Echuca)

⇒ Office National (Echuca)



## KERBSIDE RECYCLING

### Common Items That Go Into Your Recycle Bin:

#### PAPER

- ⇒ Cardboard
- ⇒ Cereal boxes
- ⇒ Computer paper
- ⇒ Envelopes
- ⇒ Greeting cards
- ⇒ Juice cartons
- ⇒ Junk mail
- ⇒ Magazines
- ⇒ Milk cartons (rinsed)
- ⇒ Newspaper
- ⇒ Office paper
- ⇒ Paper towel roll
- ⇒ Pizza boxes (clean)
- ⇒ Telephone books
- ⇒ Toilet paper rolls
- ⇒ Wrapping paper



#### METAL

- ⇒ Aerosol cans (empty)
- ⇒ Aluminium cans
- ⇒ Aluminium foil (clean)
- ⇒ Bottles and Bottle tops
- ⇒ Coffee cans
- ⇒ Cooking oil cans (empty)
- ⇒ Drink cans
- ⇒ Food cans (rinsed)
- ⇒ Jar lids
- ⇒ Lunch boxes
- ⇒ Pet food tins (rinsed)
- ⇒ Soft drink cans
- ⇒ Steel cans (rinsed)
- ⇒ Tin cans (rinsed)



#### PLASTICS

- ⇒ Bottles and Bottle tops
- ⇒ Cake trays (plastic symbols 1-7)
- ⇒ Cutlery
- ⇒ Detergent bottles
- ⇒ Ice cream containers (rinsed)
- ⇒ Ice cream container lids
- ⇒ Lunch boxes
- ⇒ Margarine tubs (rinsed)
- ⇒ Plant pots
- ⇒ Plastics with recycle symbol 1-7
- ⇒ Meat and vegetable trays with recycle symbol 1-7 (not polystyrene)
- ⇒ Seedling containers
- ⇒ Soft drink bottles
- ⇒ Take away containers (not polystyrene)
- ⇒ Yoghurt containers (rinsed)

#### GLASS

- ⇒ Beer bottles
- ⇒ Bottles
- ⇒ Broken glass - beer/wine bottles
- ⇒ Cosmetic jars (empty)
- ⇒ Jars (rinsed)
- ⇒ Medicine bottles (empty)
- ⇒ Spirit bottles
- ⇒ Wine bottles

There are some items that don't need to be put into the kerbside waste (red lid) bin. See the below table for options on for recycling within Campaspe.

## RECYCLING OPTIONS AVAILABLE FOR SELECT ITEMS

ITEM	CORRECT KERBSIDE DISPOSAL METHOD	OTHER RECYCLING OPTION
⇒ Books	RECYCLING	Accepted at many Recycle/Opportunity Shops in Campaspe ( <i>Items must be in good condition</i> ) (Not all items are accepted at all shops. Check with your local shop before bringing items if unsure)
⇒ Baskets (wicker or plastic)	WASTE	
⇒ Ceramics	WASTE	
⇒ Clothing	WASTE	
⇒ Cups and saucers	WASTE	
⇒ Drinking glasses	WASTE	
⇒ Glass (other than jars or bottles)	WASTE	
⇒ Shoes	WASTE	
⇒ Sporting goods	WASTE	
⇒ Toys	WASTE	
⇒ Electrical appliances	WASTE	Accepted for free at some Campaspe Transfer Stations (Not all items accepted for free at all transfer stations. Please see Resource Recovery Facilities Info Sheet for more information)
⇒ Light Bulbs - fluros and CFLs	WASTE	
⇒ Paint tins (dry and empty under 20L)	WASTE	
⇒ Waxed paper/cardboard	WASTE	
⇒ Manure - cow, horse and chicken	WASTE	Can be composted
⇒ Shredded paper/newspaper	RECYCLING	
⇒ Tea bags	WASTE	
⇒ Vacuum cleaner dust	WASTE	
⇒ Food Scraps - veggies and fruit	WASTE	
⇒ Batteries (household)	WASTE	Accepted for free at Aldi (Planet Ark Battery Recycling Initiative)
⇒ Eye glasses	WASTE	Accepted for free at the Echuca Library
⇒ Food Scraps - meat	WASTE	Can be feed to pets such as dogs
⇒ Plastic bags	WASTE	Accepted for free at some supermarkets in Campaspe - check with your local supermarket for more information

## KERBSIDE GARDEN ORGANICS

### Items That Go Into Your KERBSIDE GARDEN ORGANICS BIN:

- ⇒ Branches (under 300mm)
- ⇒ Garden waste
- ⇒ Grass clippings
- ⇒ Leaves
- ⇒ Plant cuttings
- ⇒ Weeds



**Note:** you can also compost the above items or take them to a transfer station

## HOW TO REUSE EVERYDAY ITEMS (and save yourself money!)



### ⇒ **Butter / Yoghurt / Sour Cream Containers**

- ⇒ Instead of buying storage containers for leftovers, wash out used food containers and use them instead. The smaller containers are the perfect size for storing individually portioned leftovers, ready to grab for lunch the next day.

### ⇒ **Empty Roll On Deodorant Bottles**

- ⇒ Want to keep the kids amused? Empty roll-on deodorant bottles can be used as paint pens for small children. Wash the plastic ball and bottle, then fill with paint and replace the ball and lid. When storing, keep it upside down with the lid on tightly.

### ⇒ **Glass Jars**

- ⇒ Use to store odds and ends (eg buttons, craft items, etc)

### ⇒ **Newspaper, Cardboard and Bubble Wrap**

- ⇒ Useful for mailing parcels, packing when moving or storing items
- ⇒ Wrap your presents in the comic pages from your local Sunday newspaper, magazines or comics. Kids (and even adults) love it!

### ⇒ **Old Clothing**

- ⇒ Use as rags around the house

### ⇒ **Plastic Supermarket Bags**

- ⇒ Use as bin liners around the home
- ⇒ Use to pick up after your pet

Choose  
to  
Reuse

Remember to give away any unwanted household items to family, friends or charity shops so that other people can have a chance to use them. “One person’s trash is another person’s treasure”

For more information contact the Environmental Project Officer - Education on **1300 666 535**.

### WEBSITES FOR MORE INFORMATION:

<http://recyclingnearyou.com.au/>