

CONTAINER DEPOSIT SCHEME - EXPLAINING WASTE STREAMS

Container Deposit Scheme

(CDS) Return Point

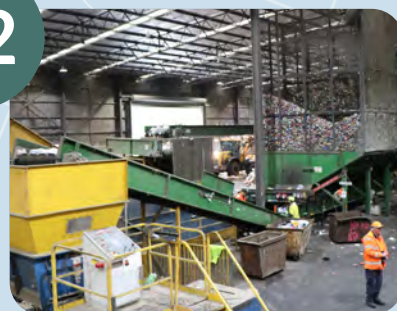
01



Return points are reverse vending machines, donation stations, automated depots, or over the counter locations at participating stores.

Containers are sorted

02



The collected containers are sent to Material Recovery Facilities (MRFs) to be sorted and processed.

Containers become something new!

03



PLASTIC
Baled



GLASS
Crushed into smaller bits



ALUMINIUM
Crushed and Baled



Sent to reprocessing plant in Australia

Sorted, washed, and shredded into flakes

Made into PET resin used in new bottles and packaging. This keeps it in the loop and out of landfill!

Sent to reprocessing plant in Australia

Sorted and recycled by colour

Melted to form new bottles and jars. Recycled glass is ready for reuse in less than a month!

Sold and shipped internationally

Melted down and rolled into sheets

Sheets shaped into new cans. Aluminium can be recycled infinitely!