

RECYCLING GUIDE

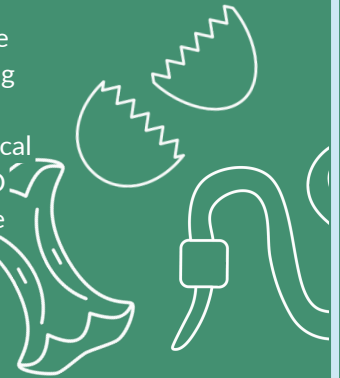
BUY BETTER

Buy second hand, buy products made from recycled and recyclable materials. Discover how you can buy better by getting involved with the sharing economy. You can find out more at Planet Ark's [Reuse Hub](#).



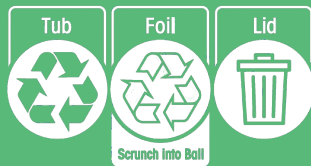
COMPOST FOOD SCRAPS

Discover how easy it is to create and maintain a home composting system using Planet Ark's [Composting Guide](#). Find your local council's composting and FOGO initiatives and services using the [Council Directory](#).



CHECK IT BEFORE YOU CHUCK IT

Check packaging for the [Australasian Recycling Label](#). It tells you which bit goes in which bin. It's the easy way to understand how to recycle right.



arl.org.au

PUT IT IN LOOSE

Keep recyclables out of bags! Otherwise, they won't be sorted correctly and will end up in landfill.

Accepted items include:

- Paper and cardboard
- Metal cans
- Glass jars and bottles
- Plastic containers
- Milk and juice cartons



LEAVE IT OUT

These don't belong in the bin. They cause contamination and end up in landfill.

- Recyclables in plastic bags
- Soft plastics
- Food waste
- Crockery
- Nappies
- Clothes/Fabric
- Polystyrene
- CDs/DVDs/Videos
- Window/drink glass
- Batteries
- Mobile phones

DROP IT OFF

Discover drop off locations where you can recycle tricky items such as mobile phones or printer cartridges. Recycling rules may also be different between councils. Discover where to recycle other materials on Planet Ark's [Recycling Near You](#).



WHAT GOES AROUND COMES AROUND